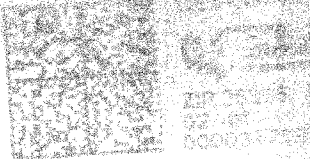
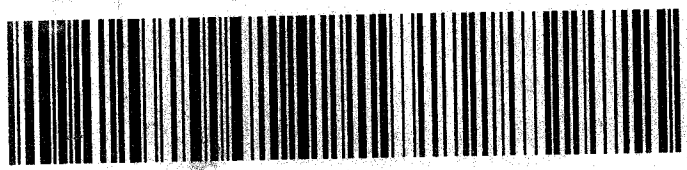


CERTIFIED MAIL



Office of the Secretary of State
Building 1 Suite 157-K
1900 Kanawha Blvd E.
Charleston, WV 25305

USPS CERTIFIED MAIL™



9214 8901 1251 3410 0003 3501 36

ERP MINERAL RESERVES LLC
CORPORATION SERVICE COMPANY
2711 CENTERVILLE ROAD
SUITE 400
WILMINGTON, DE 19808

MIXIE 229 7E 1 7211/04/21
RETURN TO SENDER
ATTEMPTED - NOT KNOWN
UNABLE TO FORWARD
SC: 25305000991 2027N208145-02417 AM

